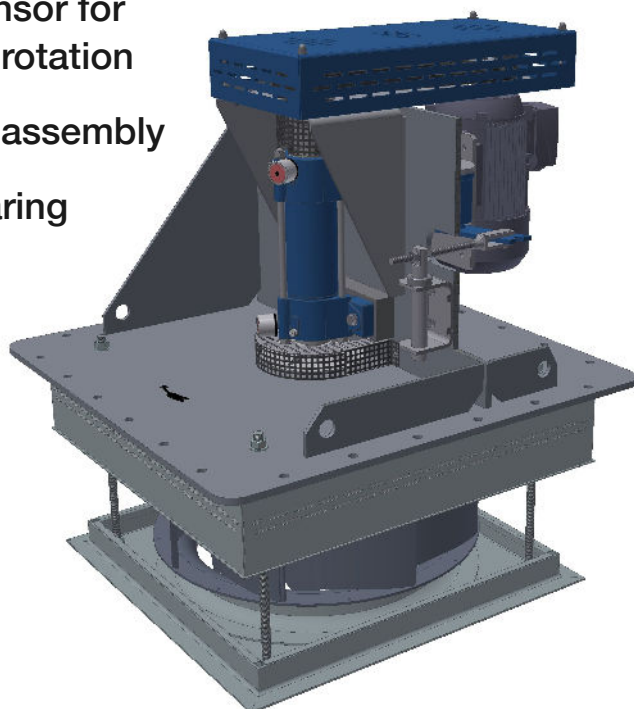


## Hot gas circulators up to 750 °C Usable for horizontal and vertical installation

- monitoring sensor for impeller shaft rotation
- block bearing assembly
- automatic bearing lubrication
- cooling air impeller



- belt-drive assembly
- energy efficient motor acc. to IEC3
- automatic belt tensioning assembly
- insulated assembly plug
- high performance impeller
- radial fan with hard coded injection nozzles



Quality conscious manufacture and assembly at our work

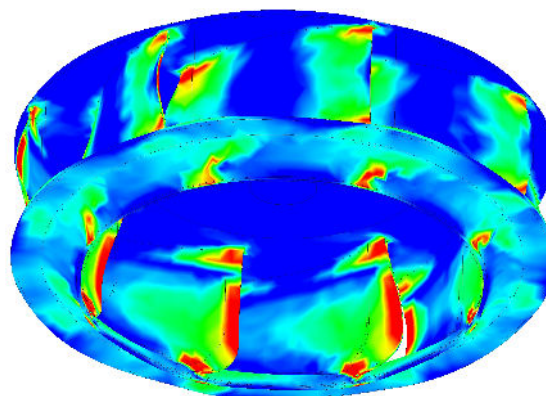


Before dispatch all hot gas circulating fans will be checked at the test bench for unbalance and power

- reeler hearth furnace plants
- roller hearth furnace plants
- gas carburizing plants
- chamber furnaces
- rotary hearth furnaces

- quenching baths / air quenching
- charging devices / means of transports
- handling technics / robots
- inner welding coil machines
- rebuildings, modernization of old plants

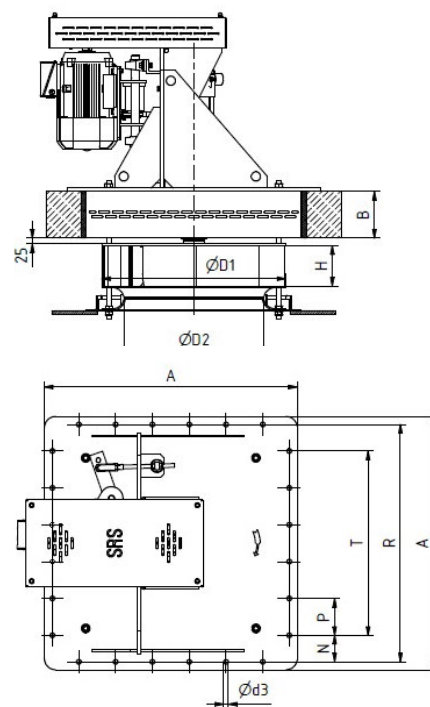
- automation and switching systems
- specialized staff for installation, maintenance and repair
- certified  
DIN EN ISO 9001:2000



static and dynamic at 2 levels balanced

supported by FEM calculation and construction

	impeller Ø	motor power	furnace temperature	flow rate	drive	flange size
D560-4,0kW-250C-L	560	4,0 kW	350 °C	12.000 m³/h	1.800 U/min	740
D560-4,0kW-250C-R	560	4,0 kW	350 °C	12.000 m³/h	1.800 U/min	740
D560-4,0kW-250C-R+ED	560	4,0 kW	350 °C	15.000 m³/h	1.800 U/min	860
D800-7,5kW-350C-R	800	7,5 kW	350 °C	20.000 m³/h	1.100 U/min	1100
D800-7,5kW-550C-RV	800	7,5 kW	600 °C	20.000 m³/h	1.125 U/min	1100
D800-7,5kW-550C-RV+ED	800	7,5 kW	600 °C	20.000 m³/h	1.125 U/min	1100
D800-7,5kW-550C-R	800	7,5 kW	600 °C	20.000 m³/h	1.125 U/min	1100
D800-15kW-550C-R	800	15 kW	600 °C	30.000 m³/h	1.200 U/min	1100
D800-15kW-550C-R	800	15 kW	600 °C	36.000 m³/h	1.770 U/min	1100



installation size	A	B	D1	D2	H	N	P	R	T	d3
D560-4,0kW-250C-L	740	202,5	Ø560	Ø441	130	95	4 x 160	670	480	Ø20
D560-4,0kW-250C-R	740	202,5	Ø560	Ø441	130	95	4 x 160	670	480	Ø20
D560-4,0kW-250C-R+ED	860	202,5	Ø560	Ø441	130	75	5 x 160	790	640	Ø20
D800-7,5kW-350C-R	1100	202,5	Ø800	Ø608	175	115	6 x 160	1030	800	Ø20
D800-7,5kW-550C-RV	1100	202,5	Ø800	Ø608	175	115	6 x 160	1030	800	Ø20
D800-7,5kW-550C-RV+ED	1100	202,5	Ø800	Ø608	175	115	6 x 160	1030	800	Ø20
D800-7,5kW-550C-R	1100	202,5	Ø800	Ø608	175	115	6 x 160	1030	800	Ø20
D800-15kW-550C-R	1100	202,5	Ø800	Ø608	225	115	6 x 160	1030	800	Ø20
D800-15kW-550C-R	1100	202,5	Ø800	Ø608	225	115	6 x 160	1030	800	Ø20

- reeler hearth furnace plants
- roller hearth furnace plants
- gas carburizing plants
- chamber furnaces
- rotary hearth furnaces

- quenching baths / air quenching
- charging devices / means of transports
- handling technics / robots
- inner welding coil machines
- rebuildings, modernization of old plants

- automation and switching systems
- specialized staff for installation, maintenance and repair
- certified
- DIN EN ISO 9001:2000